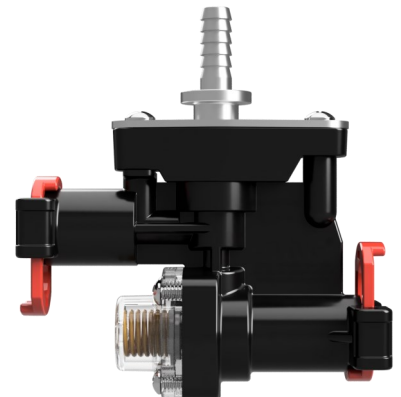
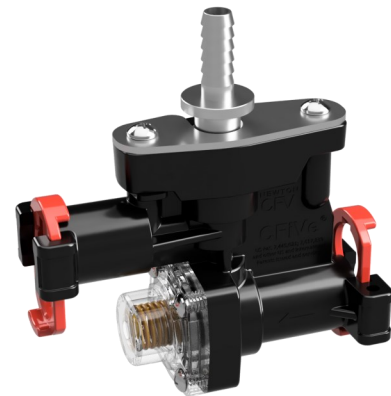
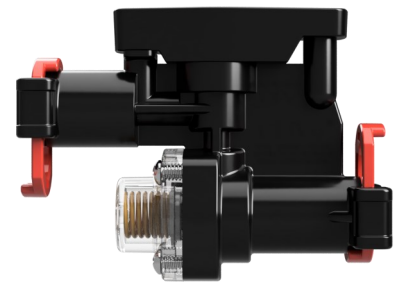
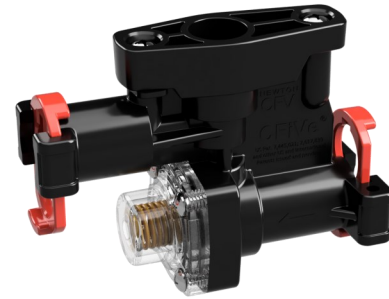


CFive® Non-Electric Flow Control

Accurate, Repeatable Flow Control
for Water, Beverage Syrups, and Flavorings

- ▶ **Operating Pressures from 14.5 PSI to 40 PSI**
- ▶ **No Wetted Mechanical Parts or Ceramics**
- ▶ **Flow Regulation Over a Wide Range (0.01 GPM to .5 GPM)**
- ▶ **Mounts to a Backing Block or in a Floating Configuration**
- ▶ **Optional Port for Pressure Switch/Sensor or 90° Outlet Configuration**

The Newton CFive® Non-Electric provides the next generation of CFValve™ flow control for economical, accurate, and repeatable flow control to the beverage and food dispensing and processing industry. Intended for use with systems with existing actuation (solenoid or manual tap), the CFive® Non-Electric utilizes the same 1/2" Dole connectors as its solenoid-equipped counterpart. Optionally, the valve can be equipped with a top-facing port which can be used for a pressure switch-based sold out feature, or as a 90° outlet. With uses in beverage dispensers, combi-ovens, and other applications, the Newton CFive® Non-Electric is an adaptable, robust part of any food or beverage system.



Specifications

Wetted Materials:	
Body	Tritan™ TX1001
Diaphragm	Freudenberg 70 FKM 727, 70 EPDM 291
Throttle Pin	303 Stainless Steel
Minimum Input Pressure	Operating Pressure + 10 PSI
Maximum Input Pressure	90 PSI with Excursions to 100 PSI
Operating Temperature	32°F–150°F (0°C–66°C)
Output Flow Range	0.01 GPM–0.5 GPM (Dependent on orifice, operating pressure, and media)
Certifications	NSF® 169
Accuracy	±1.8% of Target Output
Inlet/Outlet Ports:	
Inlet	1/2" Dole
Outlet	1/2" Dole
Port (Optional)	1/2" Dole

Gate CFV Solutions, Inc. products are covered by issued patents and pending patent applications in the U.S. and Internationally. Use of the CFive® is protected by US Patent 7,311,225; 7,617,839 and other systems and product patents issued and pending. All intellectual property rights are reserved by Gate CFV Solutions, Inc.

Contact Information

Newton CFV, Inc.	T: 772-202-7783	info@newtoncfv.com
100 Sebastian Industrial Place Sebastian, FL 32958	F: 772-388-6095	www.newtoncfv.com